

Lab Brick® Digital Attenuator

LDA-203 : 1 - 20 GHz

General Description

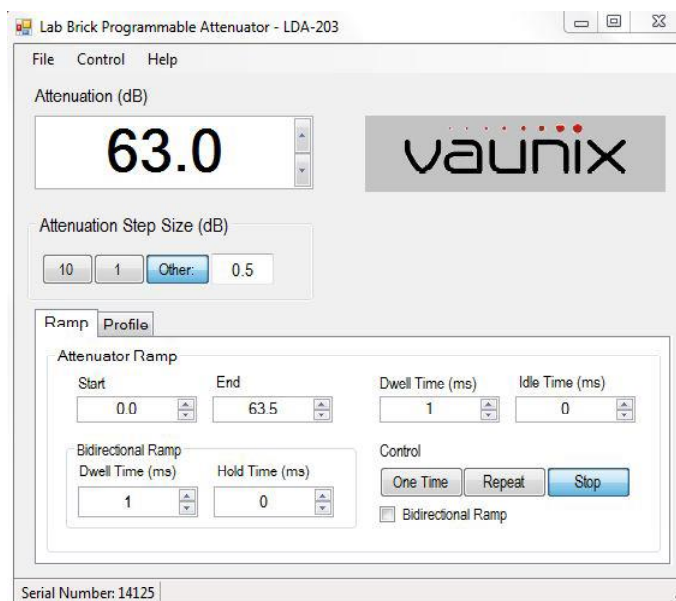
Lab Brick LDA-203 Digital Attenuators is a bidirectional 50 Ohm RF step attenuators operating from 1 to 20 GHz. A simple connection to a USB host provides DC power and control. No additional DC supply voltage is required. Lab Brick Digital Attenuators are easily programmable for fixed attenuation, swept attenuation ramps or run custom attenuation profiles directly from the included GUI. Lab Brick Digital Attenuator Windows®/Linux API dll's and LabVIEW compatible drivers are also available for custom programming applications.

Features/Benefits

- > Input power to +23 dBm
- > USB powered and controlled
- > Includes easy to install and use GUI
- > Includes Windows SDK, Linux SDK, LabVIEW drivers
- > Programmable attenuation ramp and fading profiles
- > Operate multiple devices directly from a PC or self powered USB hub
- > Easily programmable for ATE applications

Applications

- > Automated Test Equipment (ATE)
- > WiMAX, 3G, 4G, LTE, DVB, PTP Microwave Fading Simulators
- > Engineering/Production Test Labs

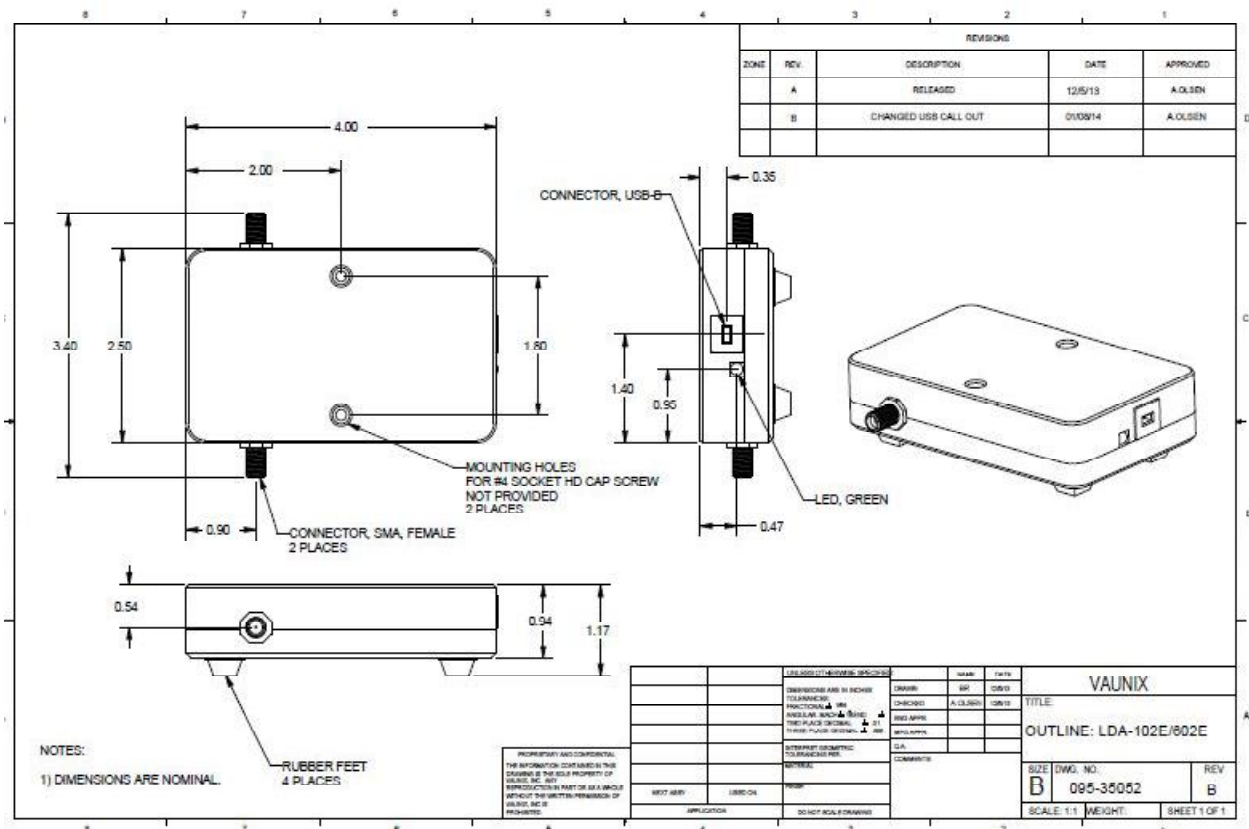


Electrical					
Models	Frequency Range	Attenuation Range	Attenuation Step Size	Max Input Level ²	Input IP3
LDA-203	1 to 20 GHz	63 dB	0.5 dB	+23 dBm	+45 dBm
Insertion Loss	< 5 GHz	5 - 10 GHz	10 - 15 GHz	15 - 20 GHz	
LDA-203	11 dB	13 dB	16 dB	19 dB	
Attenuation Accuracy ³ ± 0.5 typical, ± 0.5 + 5% of Atten. Setting, with a maximum of 3.5 dB					
Switching Speed 2 us					
Input / Output VSWR 1.3:1 typical, 2.0:1 max					
Operating Modes Manual Attenuation Control, Programmable Attenuation Ramp, Fading Profile					
DC Power 5V/65 mA from USB Type B connection					
GUI Compatibility ⁴ Windows™2000/7/8/10 for 32 or 64 bit operating systems					
Mechanical					
Dimensions 4.0" x 2.5" x 0.94" (102 mm x 64 mm x 24 mm)					
Weight <0.75 lbs. (0.34 Kg)					
RF Connectors SMA-F					
USB Cable USB 2.0 A to B					

Notes

1. These specifications are subject to change without notice.
2. Exceeding the maximum input level may cause permanent damage.
3. Customized models are available tailored to specific performance requirements.
4. The GUI software is included with the purchase of each Lab Brick Digital Attenuator.
5. A 6qUSB cable is included with the purchase of each Lab Brick Digital Attenuator.

Mechanical Outline



Ordering Information

For price, delivery and order placement please contact Vaunix Technology Corporation:
7 New Pasture Road Newburyport, MA 01950 Phone: 978-662-7839 Fax: 978-662-7842
or visit www.Vaunix.com to order online